

Class

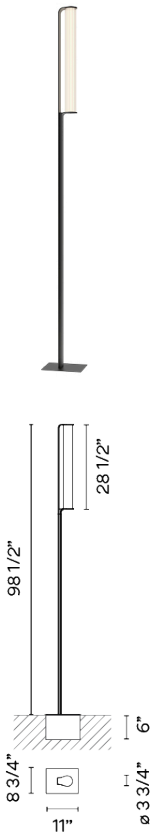
2810

VIBIA

Design By Sebastian Herkner

Class is an outdoor bollard in which matter and light come together in a single body. The matte black stem contrasts with the fluted surface of the glass cylinder. The light bathes a wide area of outdoor space.

Spec sheet



Any modifications require a minimum order quantity and extra lead time

Finish 11 Black NCS S 8500-N

LED 2700 K

Dimming 0-10V / TRIAC

Installation type Remote

LED CRI>90 990 lm 141 2700 K

Driver Constant Current 350 120~277 V V 50~60 Hz HZ
☐ Dimmable ☒ LED ☒ IP65 ☒ Multi-volt ☒ UL US

Application Outdoor

Packaging 2 Box
114.96 m x 12.6 m x 12.4 m
Gross weight 90.31
Net weight 77.09
Vol. 12.0954

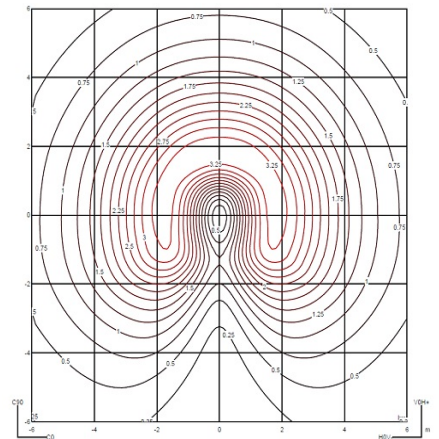
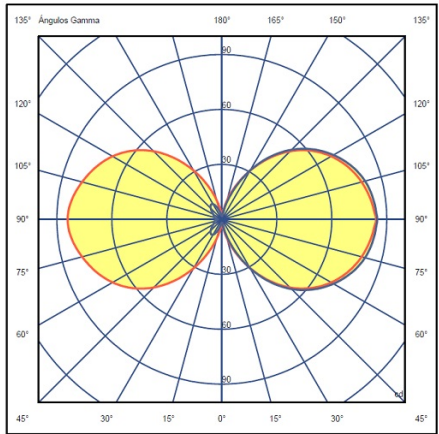
Lighting effect

Volumetric Diffuser

Subtly directed, diffused light that generates a soft hierarchy of light on to the illuminated surface



Photometric Data



Efficiency 94.86 lm/W
Coordination System CG
Total Flux 664.03 lm
Maximum Value 85.98 cd

All of our products come with a two year standard warranty. Check US & Canada Term and Condition sales@vibia.com

VIBIA, INC.

Office / Oficina
272 Fernwood Ave. Edison, NJ 08837. USA

International T 732 417 1700
Spain / Portugal T +34 934 796 970

sales@vibia.com
www.vibia.com/us/usa